

EXPERTEASE™ | DENSPLY
FRIADENT

Guiding Perfection



Area: 21.24 mm²



EXPERTEASE™ | DENSPLY
FRIADENT

Computer-guided implantology: Minimum risk, maximum success

Every implantation should be carried out smoothly, irrespective of the complexity of the case. ExpertEase™ gives you predictable results for dependable success with the maximum of convenience – for you and your patients.

Benefits at a glance

- The 3-D scan enables elucidation and transparency before the treatment
- Predictable results
- Optimal communication with the patient, referrers and dental laboratory
- Accurate cost control
- Shorter treatment times
- Fewer postoperative discomfort (e.g. pains or swellings)
- Temporary restorations can be placed quickly immediately after implant placement
- Simplified documentation

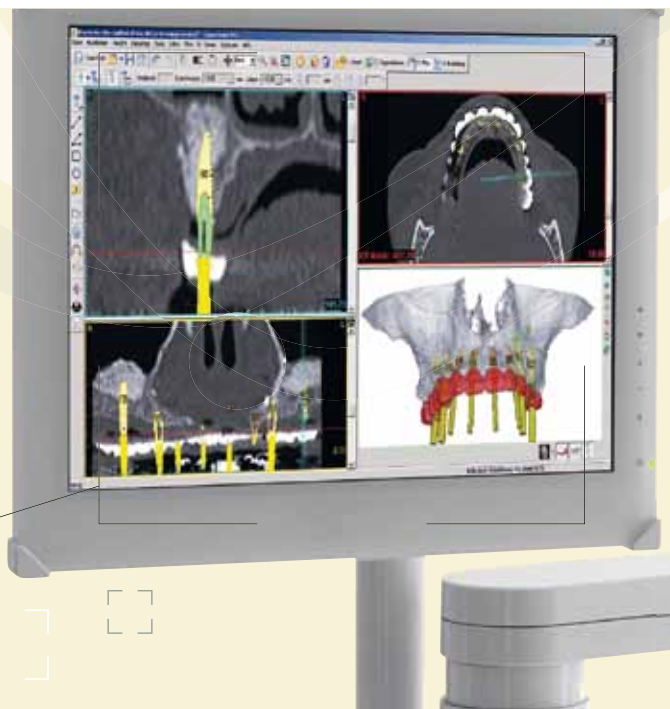
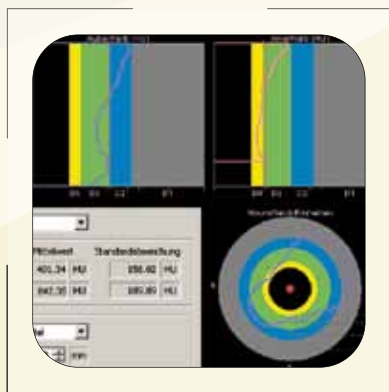
80 100 120 140

Optimal preparation: The key to predictable success

ExpertEase™ 3-D Planning Software

A comprehensive diagnosis is the key to implant success. The ExpertEase™ 3-D Software gives you a complete picture of the patient's anatomy with its axial, cross-sectional, panoramic and 3-D views of the CT/CBCT data. The software takes you step-by-step through planning, enabling you to determine dependably and precisely the implant positions, taking into account all anatomical structures.

Software



- The not implant-specific ExpertEase™ Software ensures maximum cost-effectiveness.
- CT/CBCT imaging with a scan template can be carried out with single or dual scan technique.
- Implant planning is performed with accuracy in accordance with surgical and prosthetic aspects (e.g. precise placement of XiVE® S crestally and ANKYLOS® C/X 1.5 mm subcrestally).
- Maximum use is made of the available bone avoiding augmentations.
- Measurement of bone quality provides advanced information on primary stability and possible immediate loading.
- The correct gingival height of the abutment is determined before implant placement.

- Conversion service: our specialists at DENTSPLY Friadent can convert the CT/CBCT data for you and provide high-quality, segmented 3-D data.

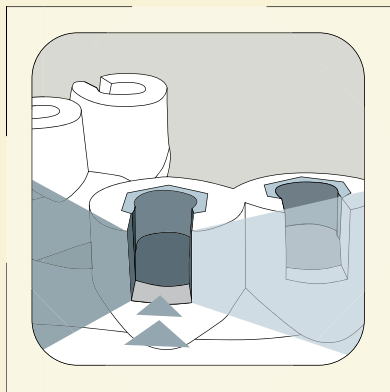
If you are planning an ExpertEase™ Guide with the “DualScan” or “OpticalScan” modules, you can determine the guide design by yourself using the “FastTrack” function and thus shorten delivery time.

Precise implementation: A reason to go further in every case

ExpertEase™ Guide

With the custom-made ExpertEase™ Guides, you can transfer the results of the planning process into the patient's mouth accurately with the custom-made ExpertEase™ Guides. Due to the unique lateral access, only ExpertEase™ Guides enable a highly comfortable operation even where space is restricted. You extend your range of indications, increasing at the same time patient compliance and loyalty.

Lateral Access



- Stereolithographic manufacture ensures precision in sub-millimeter range: implant site preparation exactly as planned with the implant positioned absolutely securely and accurately.
- All possibilities from minimal invasive procedures to simultaneous augmentation are open thanks to the choice of tooth-, mucosa- and bone-supported ExpertEase™ Guides.
- Esthetics can be restored immediately after implant placement with preoperatively manufactured provisionals.
- For each implant, along with a circular closed guide sleeve, an ExpertEase™ Guide with lateral opening aligned either lingually or the buccally can be selected.

- The lateral drill guide access offers additional comfort: it reduces the insertion height of the drill by at least 4 mm, but up to 10 mm depending on the bone quality. Thereby, enabling a smooth template-guided surgery in posterior regions and where space is restricted (e.g. older patients).

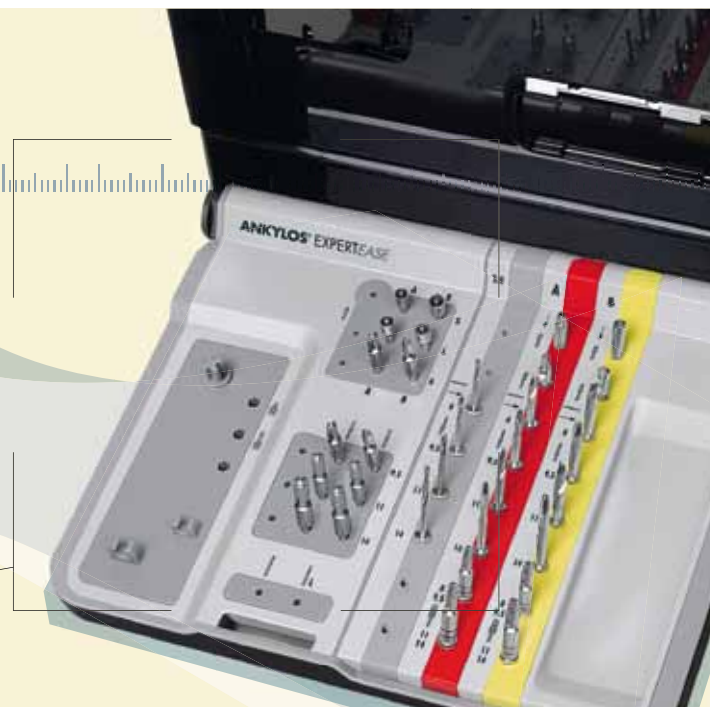
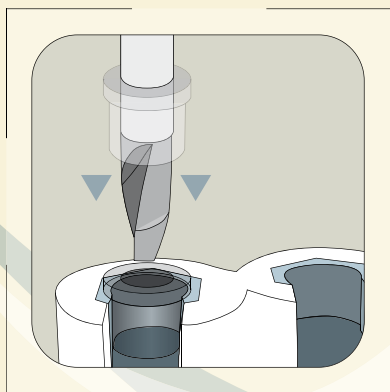
You can order the planned implants and abutments at the usual prices together with your ExpertEase™ Guide to receive a complete package of treatment for your patient.

Exact actions: Unerring with perfect technique

ExpertEase™ Sleeve-on-Drill™ Instruments

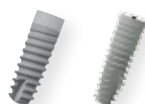
All components of the ExpertEase™ System are perfectly matched with each other. This simplifies the process of computer-guided implantation, without sacrificing precision and safety. The drills specially developed by DENTSPLY Friadent with the sleeve fixed on the instrument guarantee ease of use. Precise guidance through the drill guide is effected from tissue punch to implant placement.

Sleeve-on-Drill™



- The clearly-laid out surgery kits and drill protocols for XiVE® S and ANKYLOS® C/X implants dispense with the need for complex surgical protocols.
- The “third hand” is not required with the Sleeve-on-Drill™ sleeves premounted on the drills for guidance in the ExpertEase™ Guide.
- The Sleeve-on-Drill™ sleeve with built-in depth stop guarantees precise horizontal and vertical drill guidance.
- All drills are provided in the end length of the implant. Therefore, the shortest possible drill is always used.
- A gentle to the bone implant site preparation is supported by the internal irrigation of all drills.

Visit www.expertease.dentsply-friadent.com for additional useful information about ExpertEase™.



ExpertEase™: Precision guidance for implant success with computer-guided implantology for XiVE® and ANKYLOS®.

Order no. 6-002033/006

Manufacturer:

Friadent GmbH · P. O. Box 71 01 11 · 68221 Mannheim/Germany
Phone +49 621 4302-1265 · Fax +49 621 47 13 06 · e-mail: info@friadent.de

CE for FRIADENT Class I Devices

CE 0123 for FRIADENT Class II a, II b and III Devices

Manufacturer ExpertEase™ Software and ExpertEase™ Guide:
Materialise Dental NV · Technologielaan 15 · 3001 Leuven · Belgium

www.dentsply-friadent.com

DENSPLY
FRIADENT