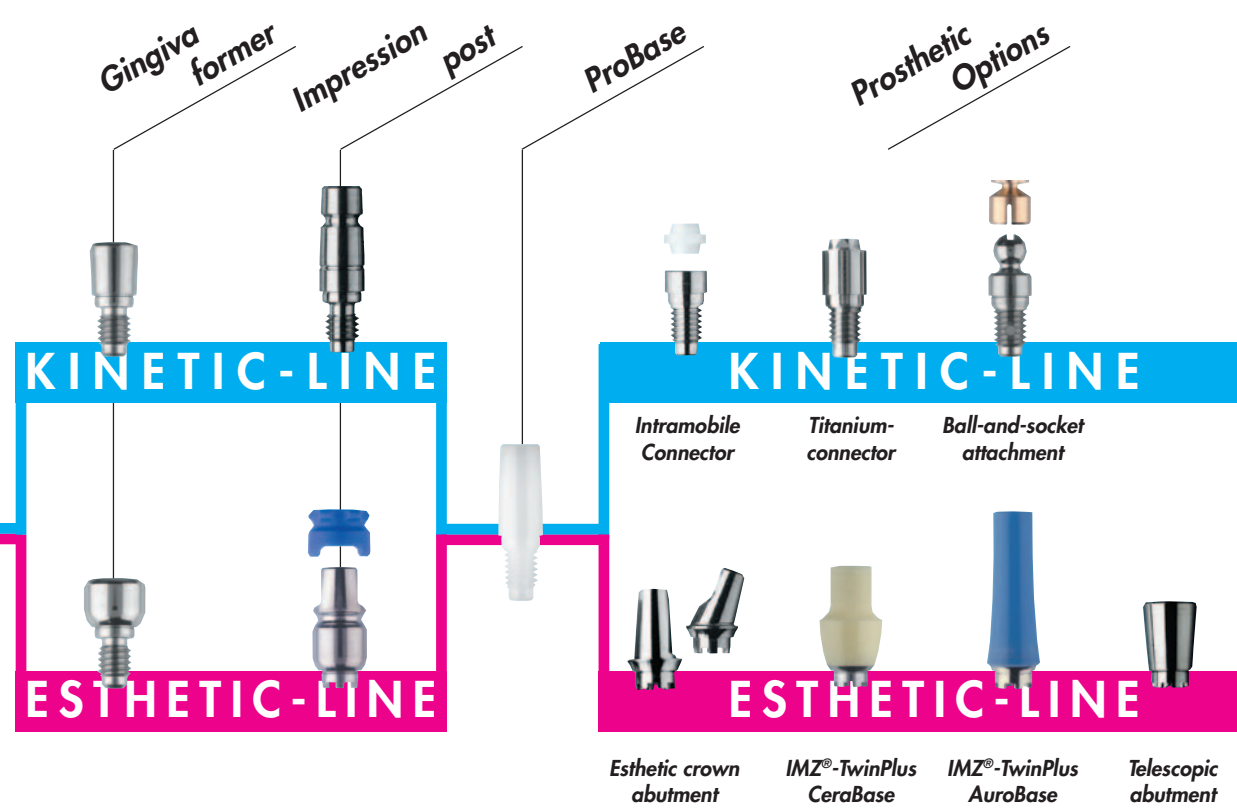
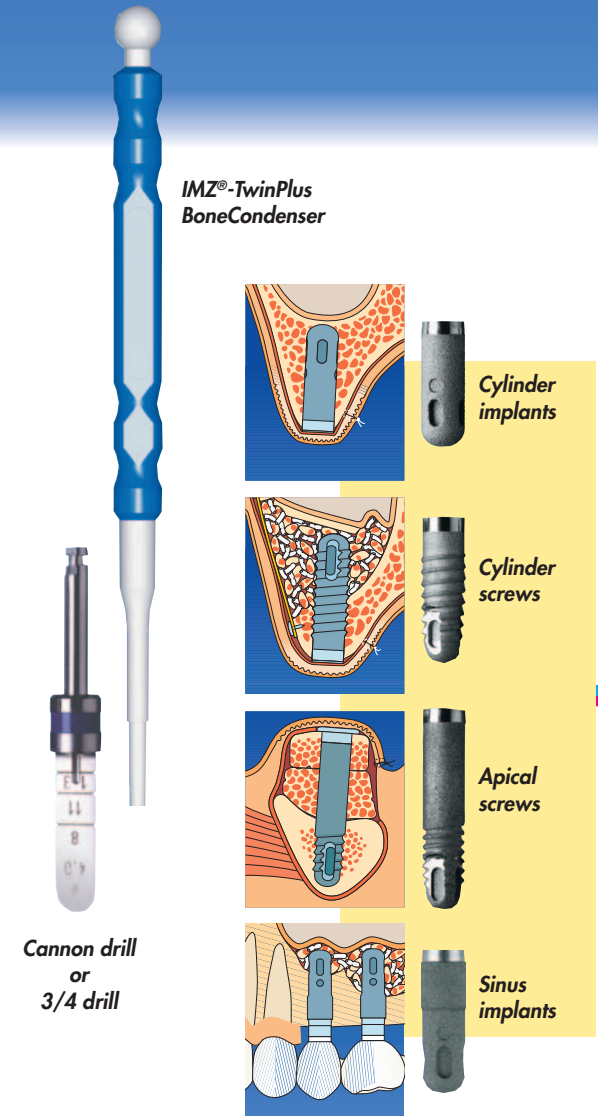


IMZ®-TwinPlus: Surgery

The modular implant system –
Ideal for the atrophied ridge

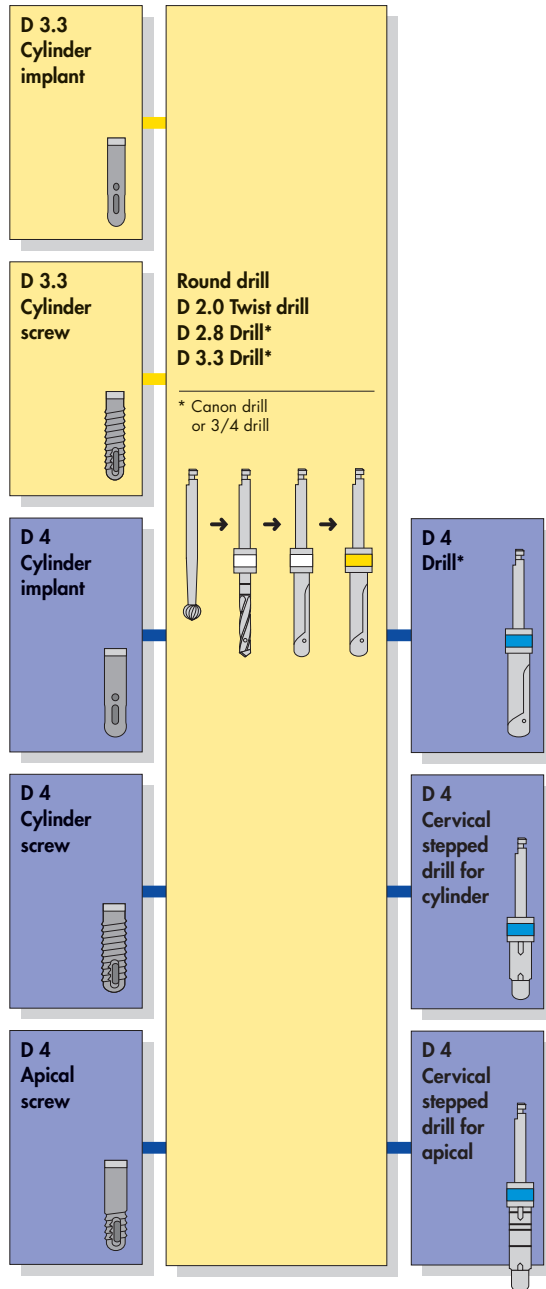
Experience makes
the difference:
1,000,000 IMZ®
implants sold during
25 years of clinical use



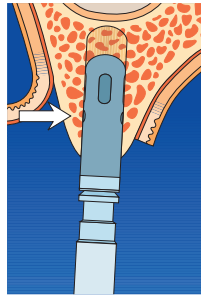
Kinetic-Line: 
Mobile or rigidly retained, occlusally screw-retained bridges, bar and attachment constructions

Esthetic-Line: 
Rigidly retained, cement-retained or horizontally screw-retained single crowns in the esthetic region

Drill sequence for implant placement



Implant Placement

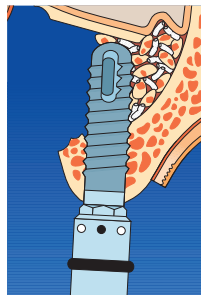
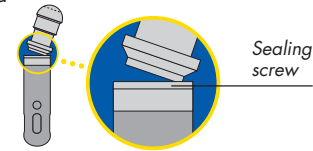


IMZ®-TwinPlus Cylinder implants:

Direct **one of the round indentations** above the longitudinal groove towards **vestibular**.

Sealing screw already threaded into the implant.

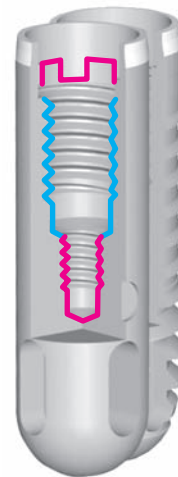
Easy removal of the innovative **snap-off post**.



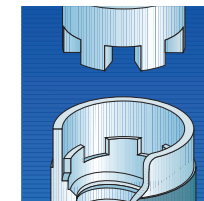
IMZ®-TwinPlus Screw implants:

Direct **one of the dots** on the seating instrument towards **vestibular**.

The sealing screw is in the silicone stopper of the inner vial.



Anti-rotational stop

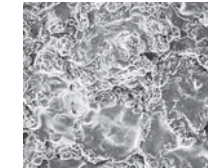


Unique for the IMZ®-TwinPlus: the patented precision interlocking since 1995

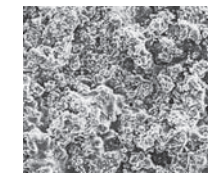
Surfaces



FRIOS® Deep Profile Surface
(grit-blasted and acid-etched) for screw implants



FRIOS® Titanium coating



and **FRIOS® Apatite coating** for cylinder implants

CE for FRIADENT Class I Devices

CE 0123 for FRIADENT Class IIa, IIb and III Devices

Manufacturer: FRIADENT GmbH · P. O. Box 71 01 11 · 68221 Mannheim/Germany
Phone: + 49 (0) 621 4302-1288 · Fax: + 49 (0) 621 47 13 06
e-Mail: info@friadent.de · Internet: <http://www.friadent.de>

DENTSPLY
FRIADENT